

43/181

BOCA GROVE PLANTATION

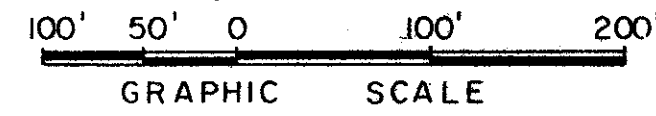
P. U. D.

181

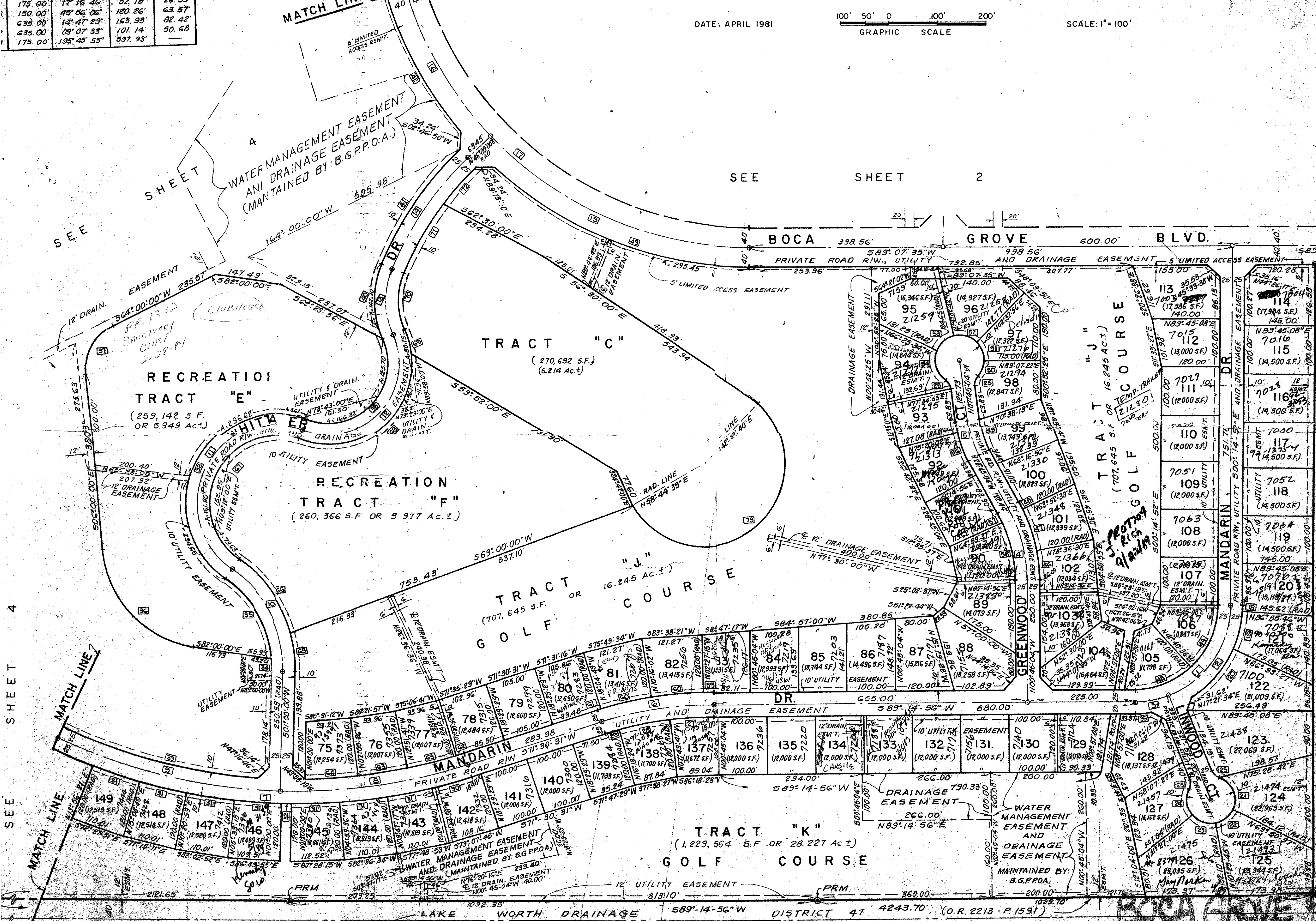
BEING PORTIONS OF SECTIONS 16 AND 21, TOWNSHIP 47 SOUTH, RANGE 42 EAST, PALM BEACH COUNTY, FLORIDA AND A REPLAT OF A PORTION OF THE PLAT OF BOCA GROVE, RECORDED IN PLAT BOOK 32, PAGES 12 AND 13 OF THE PUBLIC RECORDS OF PALM BEACH COUNTY, FLORIDA.

RADIUS	DELTA	ARC LGT.	TANG.
770.00	00° 24' 40"	3.52'	2.76'
1145.00	00° 55' 53"	19.50'	9.75'
1145.00	05° 15' 15"	105.00'	52.54'
1145.00	08° 30' 14"	110.00'	55.04'
275.00	16° 49' 01"	80.72'	40.65'
275.00	40° 40' 59"	195.26'	101.95'
140.00	166° 30' 00"	406.84'	283.20'
175.00	116° 34' 23"	356.05'	26.59'
175.00	17° 16' 46"	52.78'	63.57'
150.00	45° 56' 06"	120.26'	82.42'
635.00	14° 47' 29"	163.93'	101.14'
635.00	09° 07' 33"	101.14'	59.73'
175.00	195° 45' 55"	59.73'	—

DATE: APRIL 1981



SCALE: 1" = 100'



CURVE TABLE

No.	RADIUS	DELTA	ARC LGT.	TANG.
1	200.00	83° 29' 48"	312.40'	198.25'
2	200.00	68° 22' 32"	298.28'	185.86'
3	200.00	21° 07' 16"	78.73'	37.29'
4	325.00	28° 00' 00"	188.82'	81.03'
5	225.00	21° 00' 00"	82.47'	41.70'
6	745.00	17° 44' 25"	290.67'	116.27'
7	1170.00	42° 44' 25"	672.77'	457.81'
8	1170.00	19° 29' 29"	398.02'	200.39'
9	1170.00	23° 14' 56"	474.75'	240.49'
10	250.00	57° 30' 00"	250.89'	137.16'
11	165.00	165° 30' 00"	479.49'	479.49'
12	182.00	133° 51' 03"	350.43'	352.12'
13	175.00	89° 38' 07"	140.30'	74.11'
14	660.00	28° 55' 02"	275.51'	139.79'
15	740.00	46° 52' 25"	605.39'	320.75'
16	740.00	27° 07' 39"	350.35'	172.52'
17	740.00	74° 00' 00"	555.74'	557.63'
18	225.00	03° 19' 06"	15.03'	6.52'
19	225.00	20° 22' 19"	80.00'	40.43'
20	225.00	38° 08' 54"	130.17'	66.96'
21	50.00	96° 13' 06"	63.97'	55.74'
22	50.00	53° 24' 52"	46.61'	25.16'
23	50.00	61° 52' 45"	54.00'	23.87'
24	50.00	64° 52' 03"	56.61'	31.77'
25	25.00	48° 11' 23"	21.03'	11.18'
26	225.00	08° 39' 02"	37.64'	18.86'
27	720.00	07° 04' 37"	38.93'	45.52'
28	720.00	08° 23' 43"	105.50'	82.84'
29	720.00	02° 16' 05"	28.30'	14.25'
30	1195.00	08° 54' 31"	81.52'	40.73'
31	1195.00	04° 47' 41"	100.00'	50.00'
32	1195.00	00° 57' 32"	20.00'	10.00'
33	1145.00	20° 41' 45"	413.47'	209.01'
34	225.00	05° 40' 34"	22.29'	11.15'
35	225.00	51° 49' 26"	203.51'	103.31'
36	225.00	76° 00' 00"	238.45'	175.70'
37	700.00	70° 00' 00"	122.17'	70.02'
38	120.00	166° 30' 00"	552.14'	—
39	125.00	133° 51' 03"	292.02'	—
40	200.00	45° 56' 07"	170.34'	84.76'
41	685.00	23° 55' 02"	285.94'	145.88'
42	780.00	25° 33' 55"	320.81'	162.70'
43	780.00	43° 18' 45"	588.64'	303.71'
44	175.00	48° 34' 16"	148.35'	75.90'
45	175.00	40° 55' 32"	129.00'	65.30'
46	350.00	10° 38' 26"	63.00'	30.59'
47	350.00	14° 44' 00"	80.00'	40.26'
48	350.00	02° 37' 34"	16.04'	8.02'
49	200.00	21° 00' 00"	73.80'	37.07'
50	50.00	41° 18' 57"	36.05'	18.85'
51	50.00	46° 34' 26"	40.64'	21.52'
52	50.00	56° 59' 38"	43.45'	26.96'
53	50.00	52° 18' 52"	45.55'	24.54'
54	50.00	79° 30' 53"	63.33'	41.61'
55	250.00	12° 54' 54"	30.17'	15.11'
56	250.00	14° 05' 06"	61.46'	30.81'
57	300.00	03° 44' 41"	19.61'	9.81'
58	300.00	24° 15' 19"	127.00'	64.41'
59	770.00	01° 42' 11"	22.83'	11.42'
60	770.00	07° 42' 47"	103.00'	52.41'

0209-005